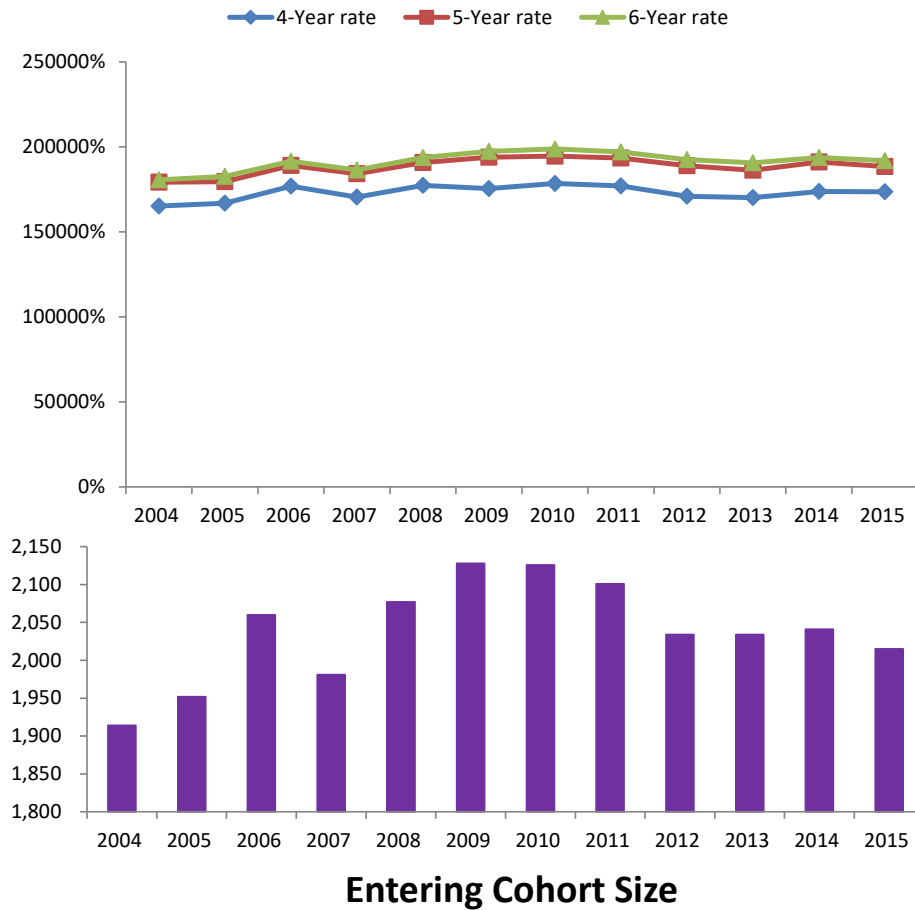


### Northwestern Graduation Rates By Entering Cohort

	2004	2005	2006	2007	2008	2009	2010	2011	2012	2013	2014	2015
4-Year rate	1,652	1,669	1,768	1,705	1,773	1,754	1,785	1,771	1,709	1,702	1,737	1,736
5-Year rate	1,792	1,795	1,890	1,842	1,908	1,939	1,946	1,935	1,889	1,863	1,911	1,885
6-Year rate	1,806	1,827	1,915	1,864	1,938	1,974	1,988	1,970	1,925	1,907	1,937	1,918
Entering cohort size	1,914	1,952	2,060	1,981	2,077	2,128	2,126	2,101	2,034	2,034	2,041	2,015

### Graduate Rates By Entering Cohort



**NORTHWESTERN UNIVERSITY  
UNDERGRADUATE GRADUATION RATE**

<b>Year Entered</b>	<b># Entered</b>	<b># Graduated in Four Years</b>	<b>% Graduated in Four Years</b>
1986	1,788	1,408	78.7%
1987	1,857	1,492	80.3%
1988	1,815	1,456	80.2%
1989	1,858	1,520	81.8%
1990	1,775	1,454	81.9%
1991	1,946	1,600	82.2%
1992	1,889	1,533	81.2%
1993	1,903	1,566	82.3%
1994	1,865	1,538	82.5%
1995	1,948	1,595	81.9%
1996	1,947	1,639	84.2%
1997	1,889	1,578	83.5%
1998	1,912	1,601	83.7%
1999	1,952	1,657	84.9%
2000	1,876	1,612	85.9%
2001	1,950	1,682	86.3%
2002	2,005	1,726	86.1%
2003	1,941	1,694	87.3%
2004	1,914	1,652	86.3%
2005	1,952	1,669	85.5%
2006	2,060	1,768	85.8%
2007	1,981	1,705	86.1%
2008	2,077	1,773	85.4%
2009	2,128	1,754	82.4%
2010	2,126	1,785	84.0%
2011	2,101	1,771	84.3%
2012	2,034	1,709	84.0%
2013	2,034	1,702	83.7%
2014	2,041	1,737	85.1%
2015	2,015	1,736	86.2%

SOURCE: Registrar's Office. Common Data Set

**NORTHWESTERN UNIVERSITY  
UNDERGRADUATE GRADUATION RATE**

<b>Year Entered</b>	<b># Entered</b>	<b># Graduated in Five Years</b>	<b>% Graduated in Five Years</b>
1986	1,788	1,556	87.0%
1987	1,857	1,646	88.6%
1988	1,815	1,592	87.7%
1989	1,858	1,653	89.0%
1990	1,775	1,605	90.4%
1991	1,946	1,749	89.9%
1992	1,889	1,701	90.0%
1993	1,902	1,733	91.1%
1994	1,866	1,710	91.6%
1995	1,948	1,763	90.5%
1996	1,947	1,795	92.2%
1997	1,889	1,742	92.2%
1998	1,912	1,751	91.6%
1999	1,952	1,805	92.5%
2000	1,876	1,729	92.2%
2001	1,950	1,797	92.2%
2002	2,005	1,847	92.1%
2003	1,941	1,829	94.2%
2004	1,914	1,792	93.6%
2005	1,952	1,795	92.0%
2006	2,060	1,890	91.7%
2007	1,981	1,842	93.0%
2008	2,077	1,908	91.9%
2009	2,128	1,939	91.1%
2010	2,126	1,946	91.5%
2011	2,101	1,935	92.1%
2012	2,034	1,889	92.9%
2013	2,034	1,863	91.6%
2014	2,041	1,911	93.6%
2015	2,015	1,885	93.5%

SOURCE: Registrar's Office. Common Data Set

**NORTHWESTERN UNIVERSITY  
UNDERGRADUATE GRADUATION RATE**

<b>Year Entered</b>	<b># Entered</b>	<b># Graduated in Six Years</b>	<b>% Graduated in Six Years</b>
1981	1,943	1,618	83.3%
1982	1,934	1,626	84.1%
1983	2,152	1,844	85.7%
1984	1,833	1,613	88.0%
1985	1,991	1,755	88.1%
1986	1,788	1,593	89.1%
1987	1,857	1,656	89.2%
1988	1,815	1,603	88.3%
1989	1,858	1,661	89.4%
1990	1,775	1,617	91.1%
1991	1,946	1,758	90.3%
1992	1,889	1,710	90.5%
1993	1,903	1,747	91.8%
1994	1,866	1,717	92.0%
1995	1,948	1,784	91.6%
1996	1,947	1,812	93.1%
1997	1,889	1,759	93.1%
1998	1,912	1,761	92.1%
1999	1,952	1,823	93.4%
2000	1,876	1,740	92.8%
2001	1,950	1,810	92.8%
2002	2,005	1,869	93.2%
2003	1,941	1,847	95.2%
2004	1,914	1,806	94.4%
2005	1,952	1,827	93.6%
2006	2,060	1,915	93.0%
2007	1,981	1,864	94.1%
2008	2,077	1,938	93.3%
2009	2,128	1,974	92.8%
2010	2,126	1,988	93.5%
2011	2,101	1,970	93.8%
2012	2,034	1,925	94.6%
2013	2,034	1,907	93.8%
2014	2,041	1,937	94.9%
2015	2,015	1,918	95.2%

SOURCE: Registrar's Office. Common Data Set